

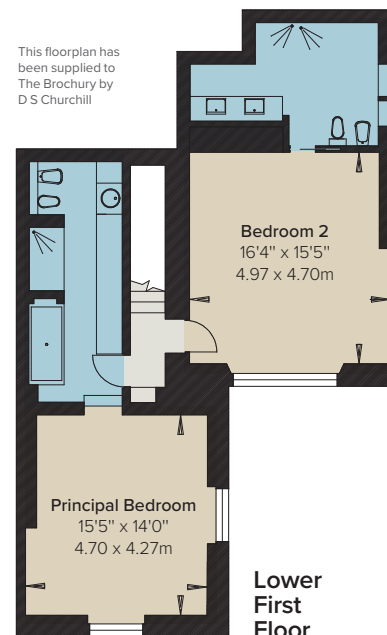
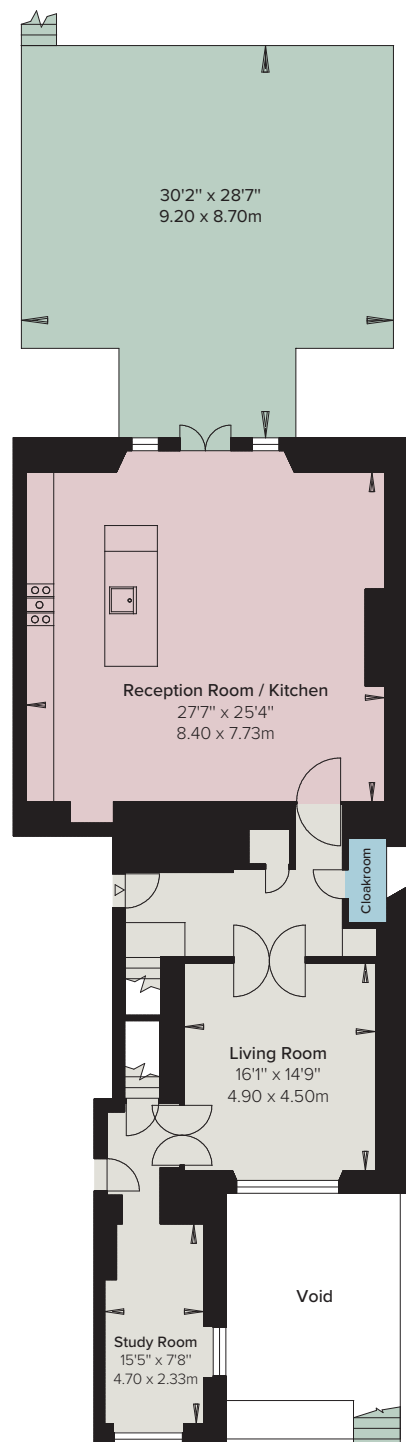
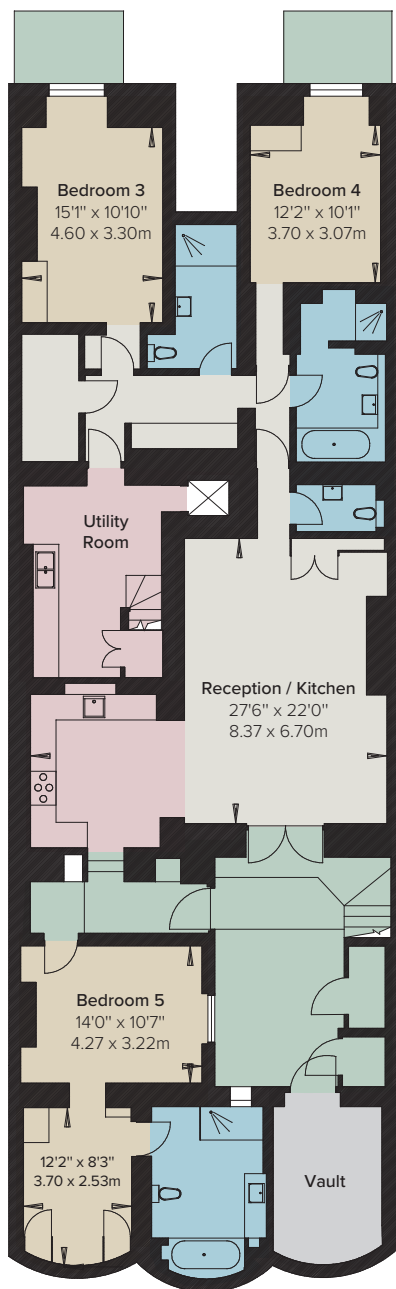
Hyde Park Gardens

London W2





Situated on the highly sought-after Hyde Park Gardens, a stunning apartment with direct access onto the communal gardens. Set over the ground, lower first and lower ground floors, the apartment has spectacular entertaining space with the main reception room leading out onto the private terrace, as well as five bedrooms and five bathrooms, one of which can be separated for staff accommodation.



Approximate Gross Internal Area

4,362 sq ft / 405.2 sq m
including lift and external vault

External Vault 100 sq ft / 9 sq m

External Area 1,003 sq ft / 93 sq m

Location

Located in Connaught Village, the property enjoys proximity to boutique shops, cafés, restaurants, and pubs, as well as being conveniently positioned near Paddington Station and Lancaster Gate Underground Station.

Accommodation

- Entrance hall
- Kitchen/Dining/ Reception room
- Living room
- Study
- Principal bedroom suite
- Further bedroom suite
- Two further bedrooms
- Two further bathrooms
- Cloakroom
- Secondary kitchen/ staff area
- Staff bedroom suite
- Utility room
- Terrace
- Storage vaults
- Building Lift
- Day Porter, Monday to Saturday

Terms

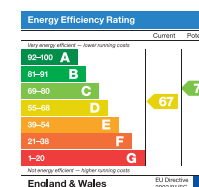
Tenure: Delivered on completion with share of freehold

Service Charge: TBC

Local Authority: City of Westminster

Council Tax: Band H

EPC: Rating D



These particulars are for general information only and do not constitute any part of an offer or contract. All statements contained therein are made without responsibility on the part of the vendors or lessors and are not to be relied upon as statement or representation of fact. Intending purchasers or lessees must satisfy themselves, by inspection, or otherwise, as to the correctness of each of the statements or dimensions contained in these particulars. This floorplan is for guidance only and not for valuation purposes. 23/04/25 DSC-250414-03-MS



DS Churchill

29 Farm Street London W1J 5RL

+44 (0)20 7629 7563

info@dschurchill.com

dschurchill.com