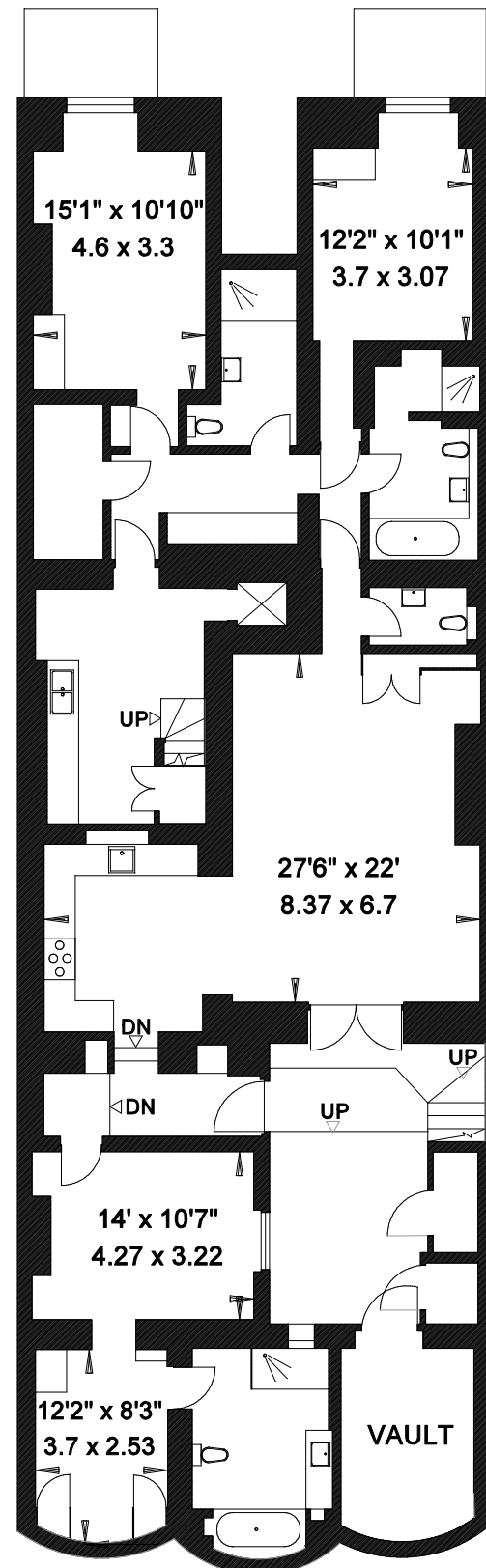


FLAT 1
14 HYDE PARK GARDENS
LONDON W2

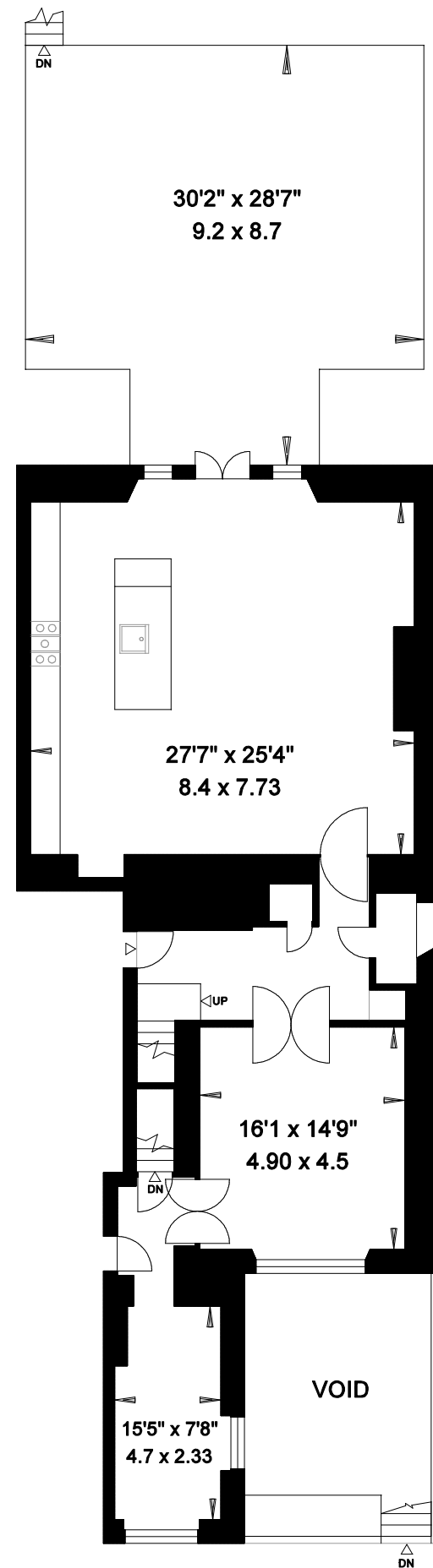
**Gross Internal Area = 405.2 sq. metres
4362 sq. feet
(Including Lift/ External Vault)**

External Vault = 9 sq. metres/ 100 sq. feet

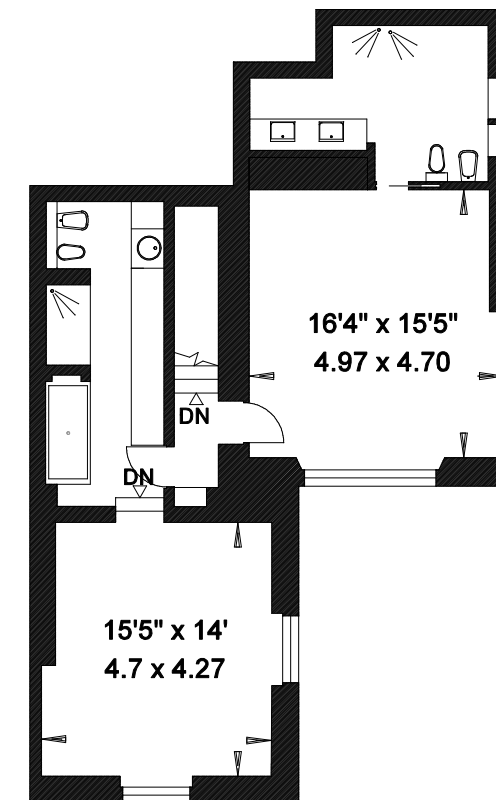
External Area = 93 sq. metres/ 1003 sq. feet



LOWER GROUND FLOOR



GROUND FLOOR



LOWER FIRST FLOOR