

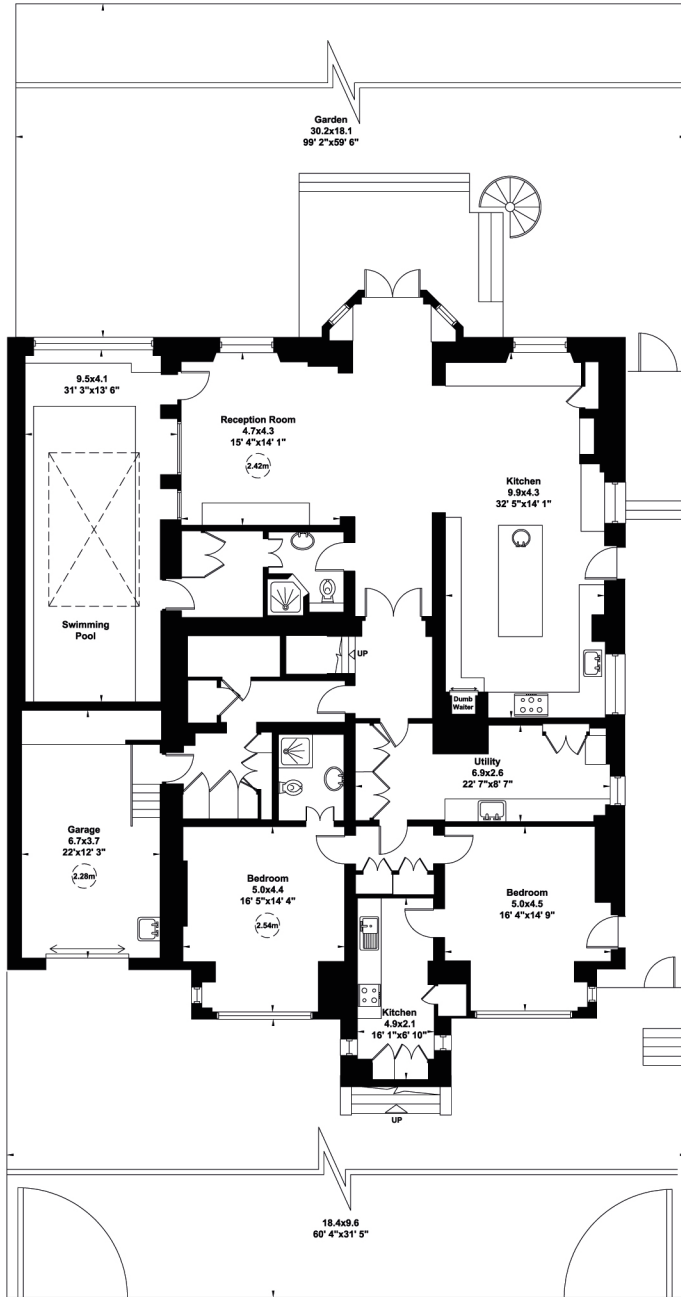
Addison Road, W14

Gross internal area (approx.)

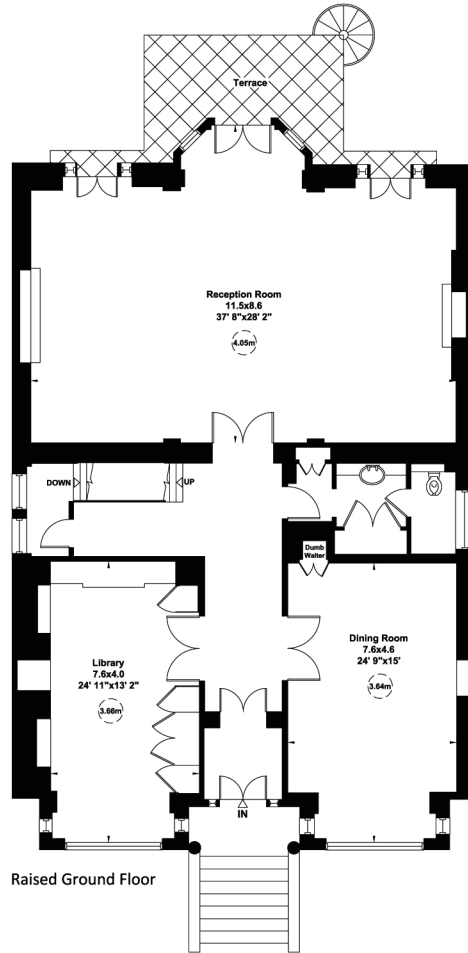
916 Sq m (9858 Sq ft) Including Under 1.5m and Under Eaves

887 Sq m (9544 Sq ft) Excluding Under 1.5m and Under Eaves

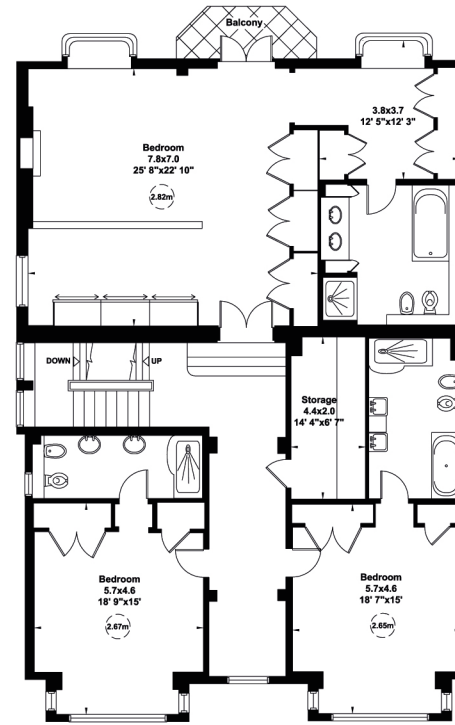
For identification only. Not to Scale



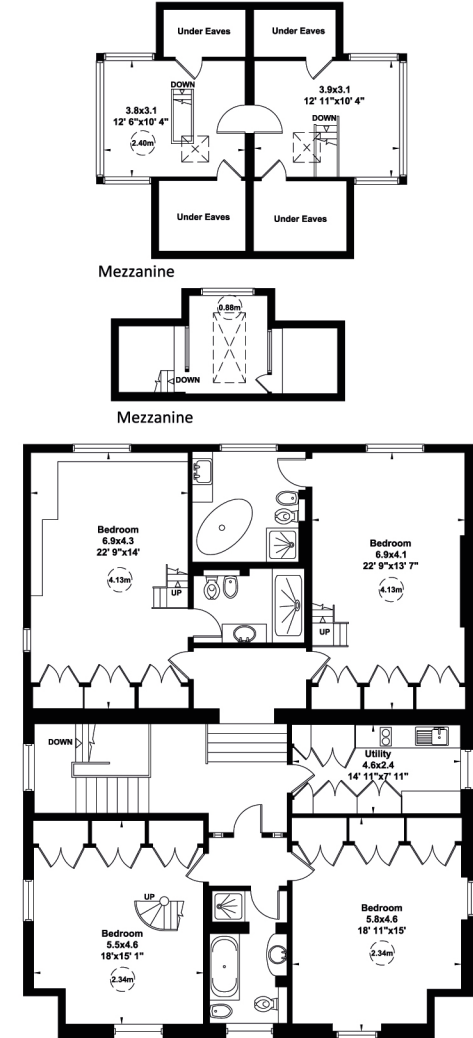
Lower Ground Floor



Raised Ground Floor



First Floor



Second Floor