

**APPROXIMATE IPMS2 FLOOR AREA**

**MAIN HOUSE** 3,208 sq ft / 298 sq m

**GARAGE** 280 sq ft / 26 sq m

**STORES** 312 sq ft / 29 sq m

**UTILITY ROOM / ATTIC SPACE** 172 sq ft / 16 sq m

**BOILER ROOM** 32 sq ft / 3 sq m

**TOTAL**

**4,004 sq ft / 372 sq m**

includes house limited use area 323 sq ft / 30 sq m

includes attic space limited use area 75 sq ft / 7 sq m

Outbuildings not shown in actual location or orientation

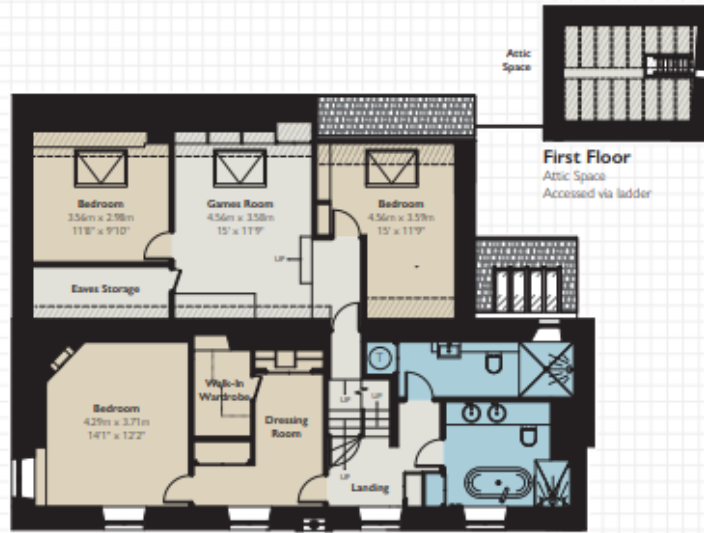
© Simply Plans Ltd Job No SP2980

This plan is for identification and guidance purposes only.

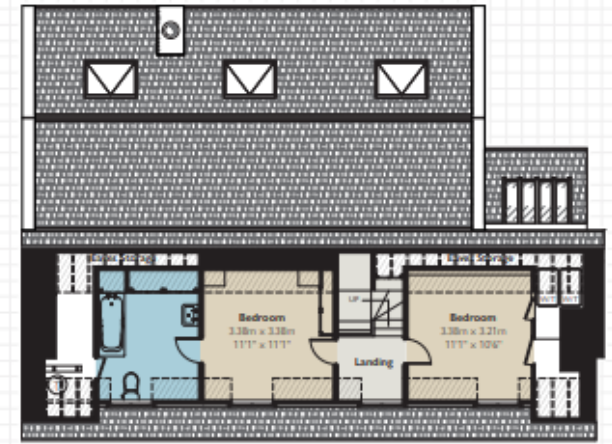
Drawn in accordance with RICS guidelines.

Not to scale unless specified.

PMS = International Property Measurement Standard



First Floor



Second Floor



Ground Floor



These particulars are for general information only and do not constitute any part of an offer or contract. All statements contained therein are made without responsibility on the part of the vendors or lessors and are not to be relied upon as statement or representation of fact. Intending purchasers or lessees must satisfy themselves, by inspection, or otherwise, as to the correctness of each of the statements or dimensions contained in these particulars. This floorplan is for guidance only and not for valuation purposes.  
28/03/23 DSC-230324-01GG