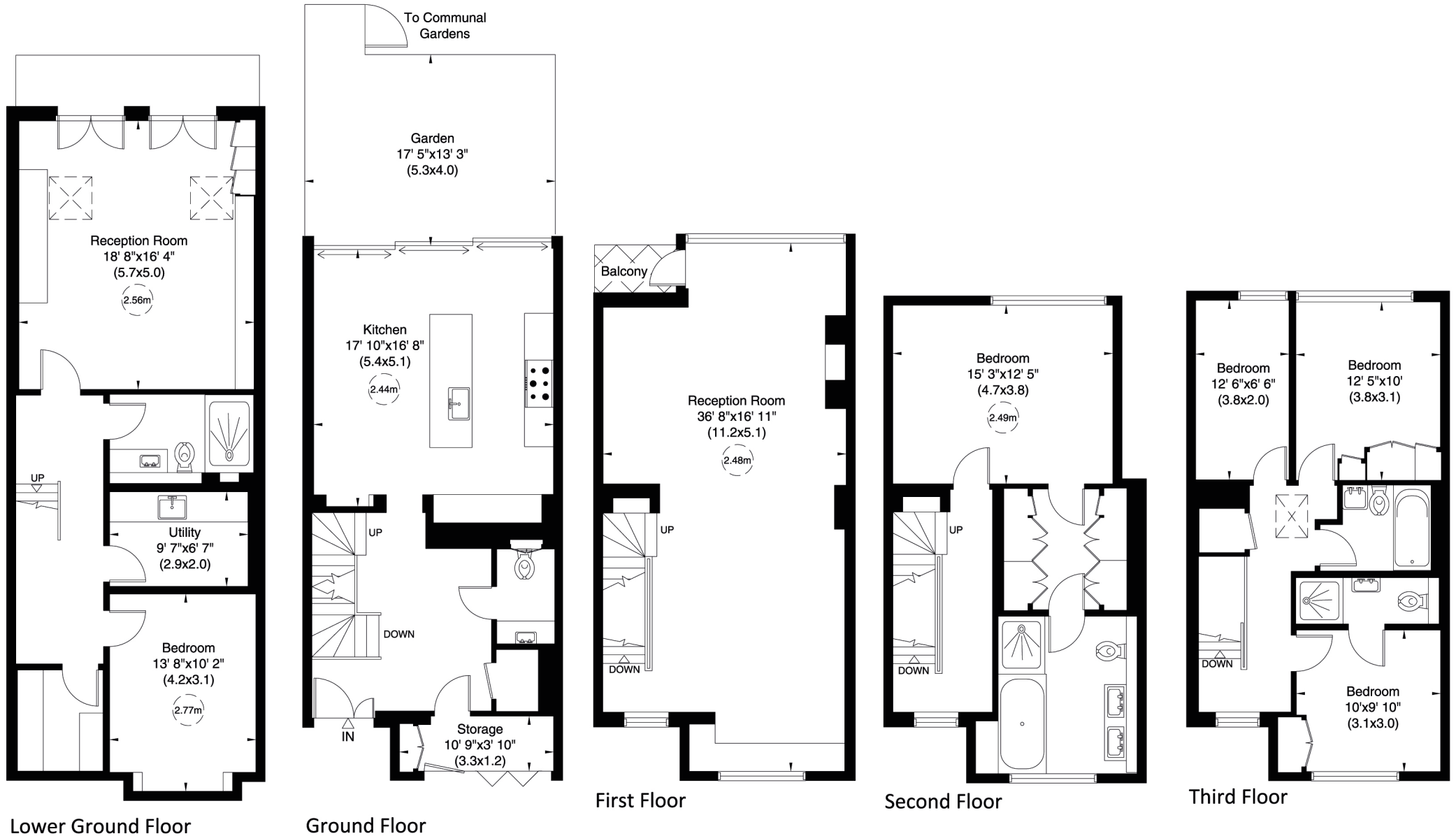


Woodsford Square, W14

Approximate Gross Internal Area
274 sq m/ 2946 sq ft



Not to Scale, for identification only



Lower Ground Floor

Ground Floor

First Floor

Second Floor

Third Floor

For guidance only and must not be relied upon as a statement of fact.
All measurements and areas are approximate only (and have been prepared in accordance with the current edition of the RICS Code of Measuring Practice).

