

Wallingford Avenue, W10

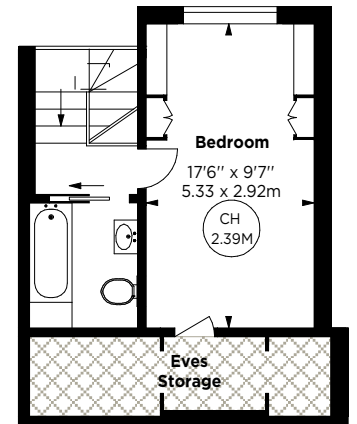
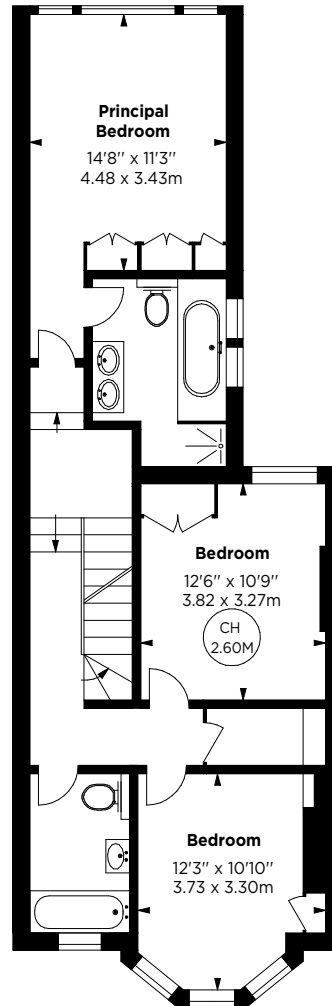
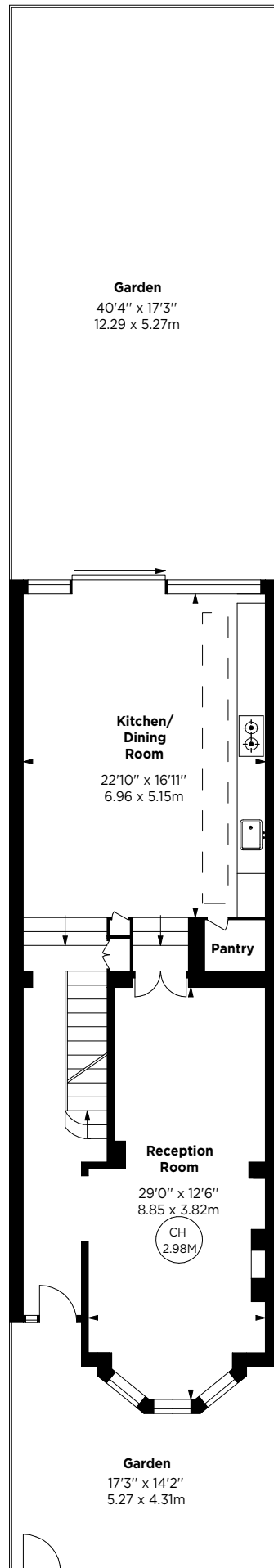
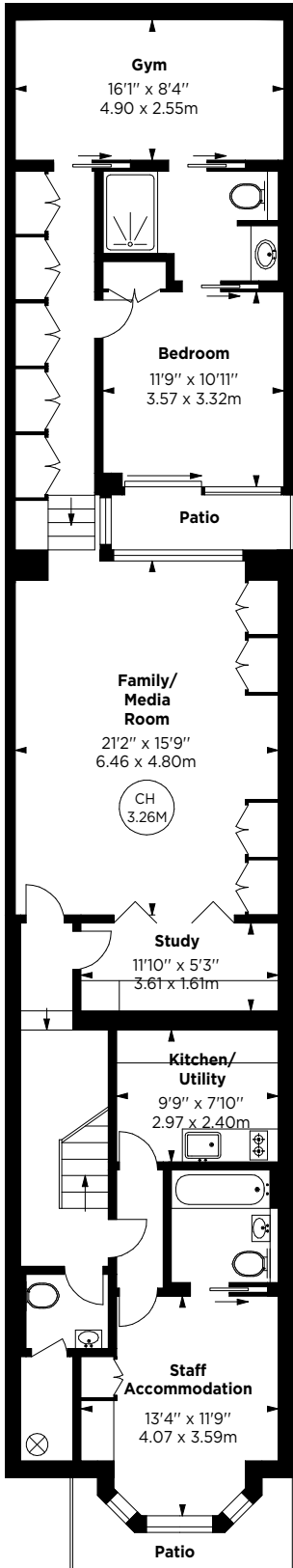
APPROX. GROSS INTERNAL AREA *
3293 Sq Ft - 305.92 Sq M
(EXCLUDING EAVES STORAGE)

EAVES STORAGE
78 Sq Ft - 7.25 Sq M

TOTAL APPROX. GROSS INTERNAL AREA *
3371 Sq Ft - 313.17 Sq M

This floorplan is for GUIDANCE ONLY and NOT FOR VALUATION purposes.

Key :
CH - Ceiling Height
☒ - Under 1.5m



SECOND FLOOR

FIRST FLOOR

LOWER GROUND FLOOR

GROUND FLOOR

© Alex Winship Photography Ltd.