



Clarendon Road

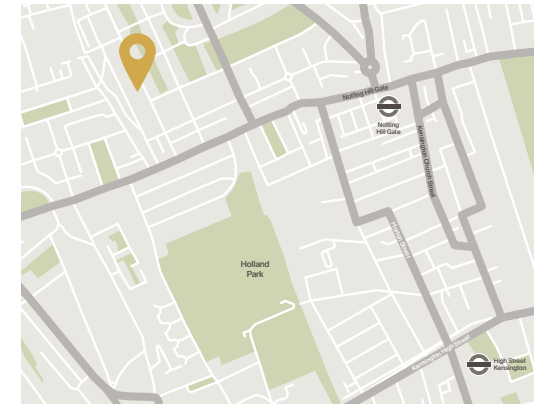
NOTTING HILL W11

An exceptional six bedroom family home, set out over 4,208 sq ft and five floors. Beautifully finished throughout, the house has an abundance of living and entertaining space which flows out into its private garden and terrace. Conveniently located near to both Notting Hill Gate and Holland Park and all the local amenities this prestigious area has to offer.









ACCOMMODATION

- Entrance Hall
- Drawing room leading out onto the terrace
- Further reception room
- Study
- Kitchen/dining room leading out into the garden
- Principal bedroom with en suite bathroom and two dressing rooms
- Three further en suite bedrooms
- One additional bedroom
- Staff bedroom suite
- Separate utility area
- Wine cellar
- Plant room
- Terrace
- Garden
- Air conditioning throughout

TERMS

Price: £15,750,000

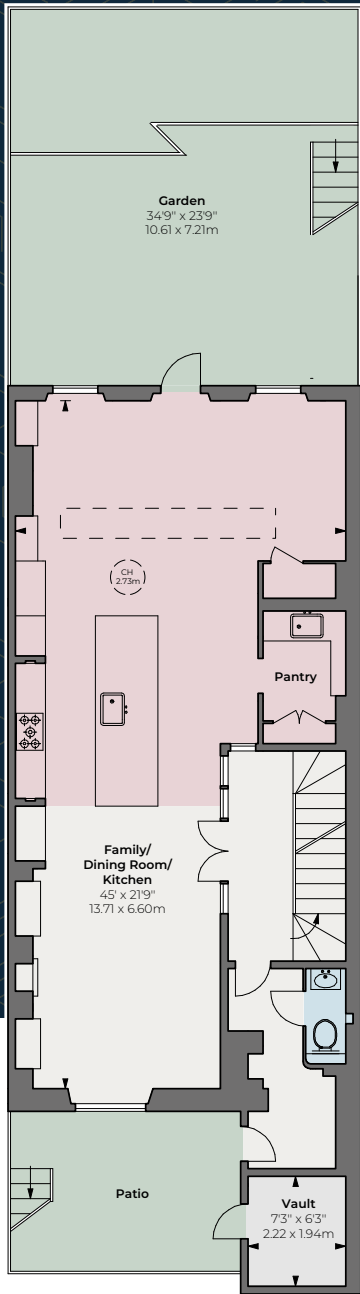
Tenure: Freehold

Local Authority: The Royal Borough of Kensington & Chelsea

Council Tax: Band H



LOWER
GROUND
FLOOR



APPROXIMATE GROSS
INTERNAL AREA

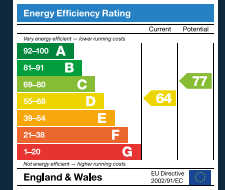
4,208 sq ft
390.92 sq m

VAULT
AREA

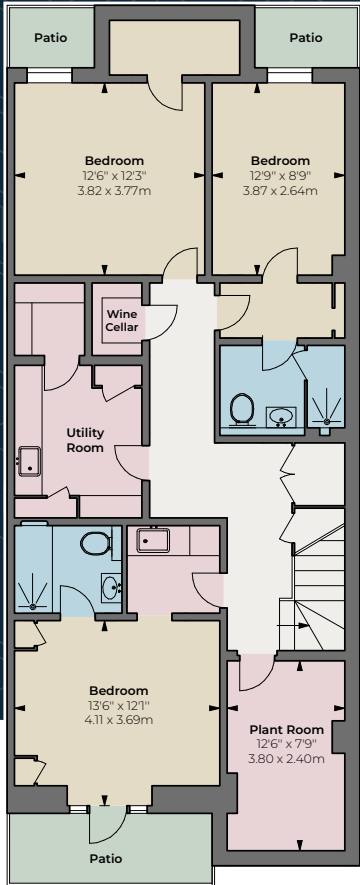
46 sq ft
4.27 sq m

TOTAL APPROXIMATE GROSS
INTERNAL AREA

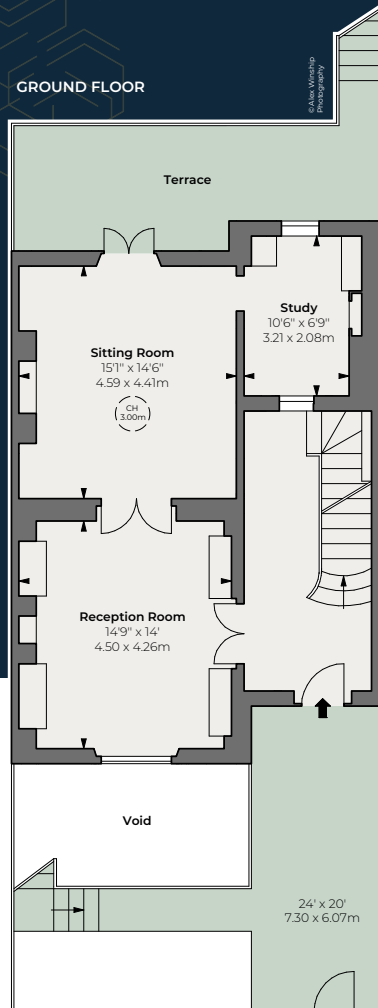
4,254 sq ft
395.20 sq m



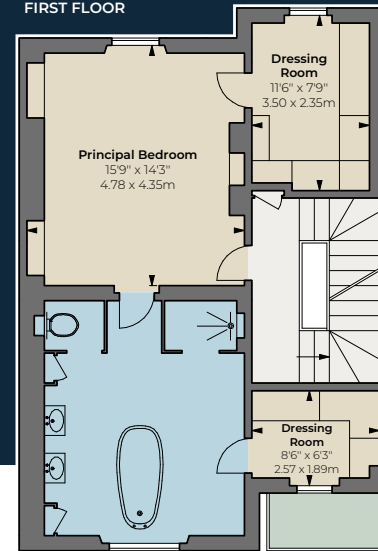
BASEMENT



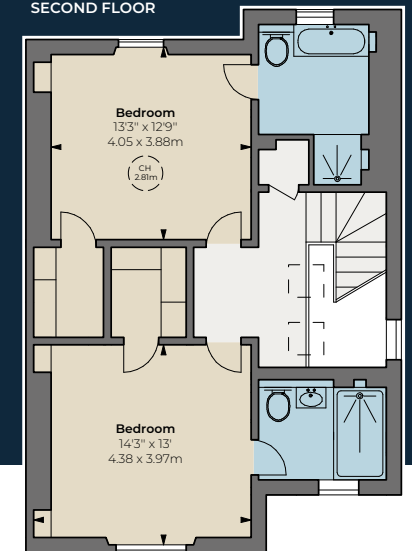
GROUND FLOOR



FIRST FLOOR



SECOND FLOOR



THE
BROCHURE
ALEX
WIKSHIP

These particulars are for general information only and do not constitute any part of an offer or contract. All statements contained therein are made without responsibility on the part of the vendors or lessors and are not to be relied upon as statement or representation of fact. Intending purchasers or lessees must satisfy themselves, by inspection, or otherwise, as to the correctness of each of the statements or dimensions contained in these particulars. This floorplan is for guidance only and not for valuation purposes. 19/06/23 DSC-230605-03GC

Floorplan for guidance only, not to scale or valuations purposes. It must not be relied upon as a statement of fact. All measurements and areas are approximate and have been prepared in accordance with the current edition of the RICS Code of Measuring Practice.



D S CHURCHILL
PROPERTY CONSULTANTS

29 Farm Street London W1J 5RL
+44 (0)20 7629 7563 / dschurchill.com