

Elgin Crescent, W11

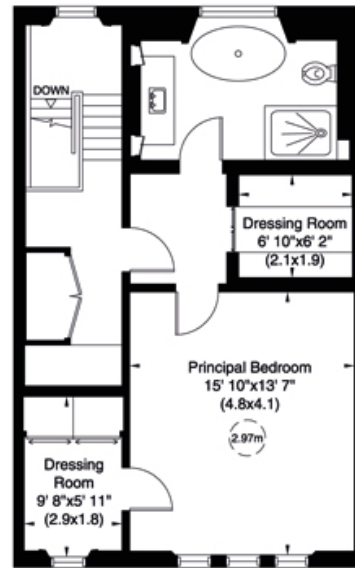
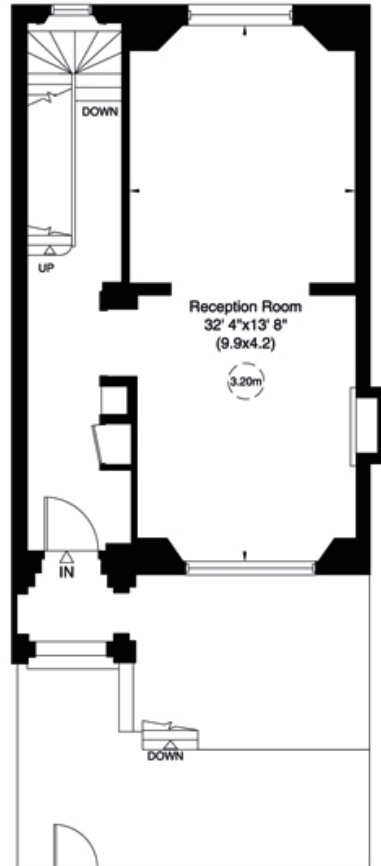
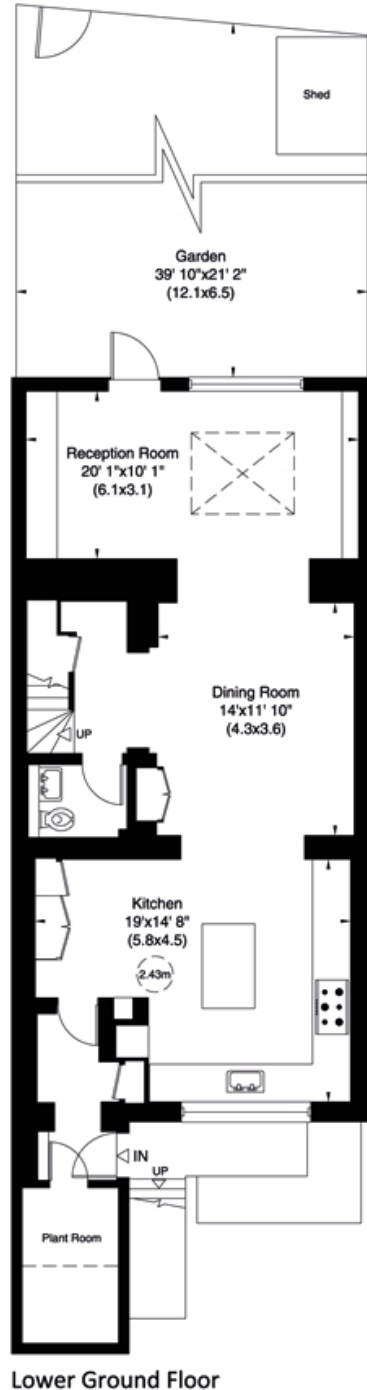
Gross internal area (approx.)

304 Sq m (3275 Sq ft) Including Under 1.5m

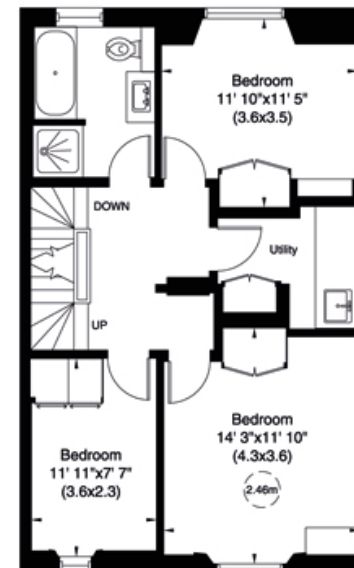
301 Sq m (3238 Sq ft) Excluding Under 1.5m

For identification only, Not to Scale

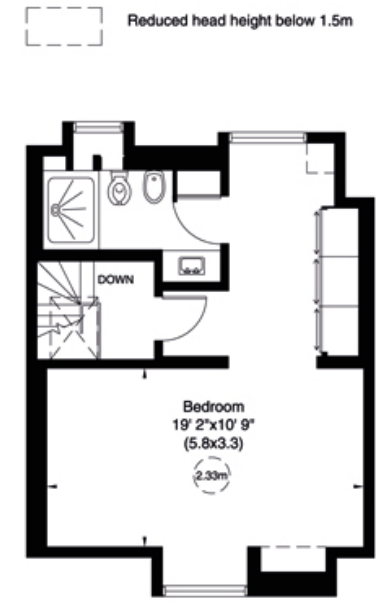
capital 020 8871 7722



First Floor



Second Floor



Third Floor

Reduced head height below 1.5m